

User Guide

This document includes the important information to ensure safe usage of USB-Morse typeS. Before using USB-Morse typeS, please read through this "User Guide" and "Safety Instructions" carefully. If anything is unclear, please contact us for more detailed instructions.



Contents

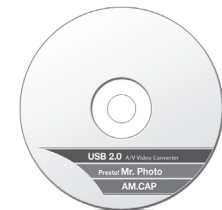
Packaged Items	-----	1
Features	-----	2
Receiving Signal	-----	2
Connection	-----	3
Specifications	-----	3

Packaged Items

Before using USB-Morse typeS, please verify that all the necessary items are included. If you find any part missing, defective, or damaged, please contact us.

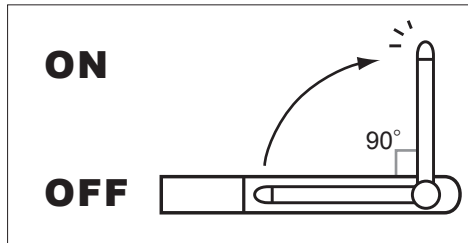
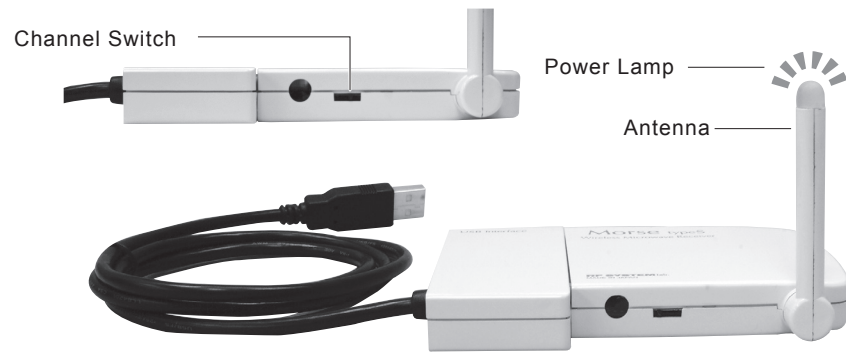


USB-Morse typeS

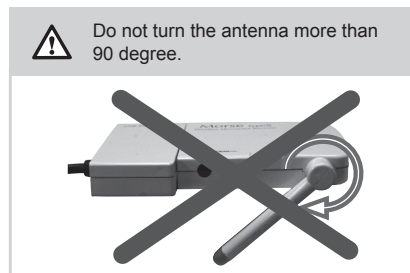


Mr. Photo & USB2.0 & AM.CAP
CD-ROM ×1

Features



※Perpendicular to the floor.

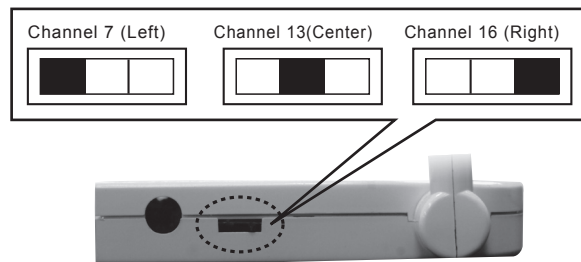


Receiving Signal

Adjust the channel setting in correspondence with the camera/transmitter channel.

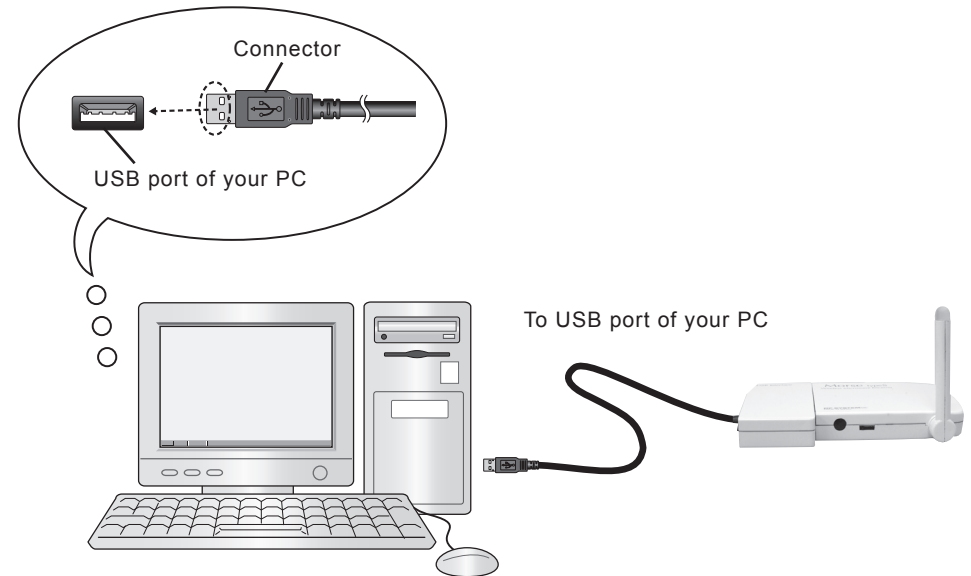
●Channel Switch

See below to adjust the channel setting.



Connection

1. Turn on the computer.
2. Refer to "Installation Manual" for set up the USB receiver to your computer.



Note: Do not use the USB hub. Plug the USB cable directly into the USB port of your computer.

Specifications

- Dimensions (W/D/H): 110×79×15 (mm) / 4.4"×3.1"×0.6"
- Weight: 89g / 3.5oz.